

CHRC Road Resurfacing Works – January 2022

Programme of Works (progress and weather dependent)

Dear Residents,

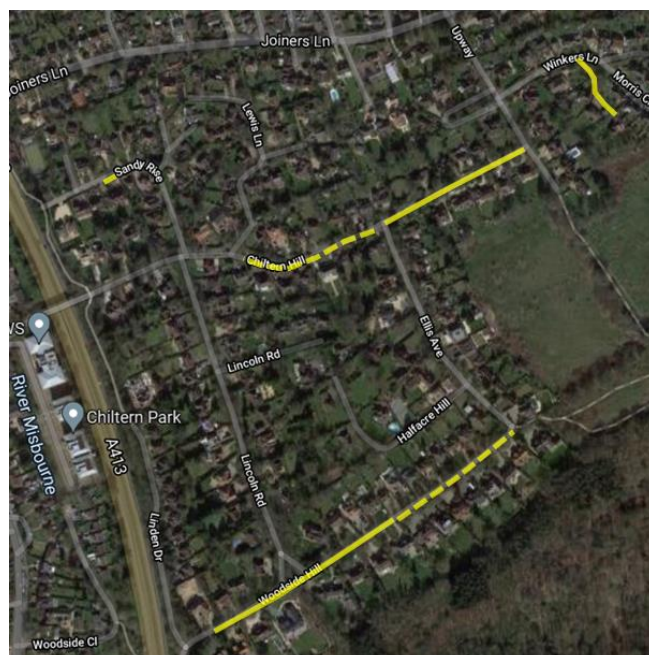
We have recently agreed a revised programme of road resurfacing work to maintain the surface of our roads around the Estate commencing 17 January 2022 as described below and highlighted on the Google Maps extract.

w/c 17 January 2022 - Scope of Works (solid line)

- **Winkers Lane Spur.** Laying a new asphalt road surface from Winkers Lane to the end of Winkers Lane Spur
- **Lower Woodside Hill.** Replace asphalt road surface from near estate entrance to approx. Mulberry House
- **Upper Chiltern Hill.** Replace asphalt road surface from Ellis Ave roundabout to Upway
- **Sandy Rise.** Patch repair works

Spring 2022 -Scope of Works (dashed line) (dates tba)

- **Upper Woodside Hill.** Replace asphalt road surface from Mulberry House to Ellis Ave
- **Middle Chiltern Hill.** Replace asphalt road surface from Ellis Ave roundabout to Ochre House
- Other minor road surface and speed bump repairs



During Monday 17th and Tuesday 18th January 2022, vehicular access to some residents' properties may be reduced for a short period during the day by our road surfacing contractor undertaking preparatory work to remove the existing road surface on the various estate roads listed in the table below. During this time, you may have to wait for a short time, or use another route, whilst these preparatory works are being undertaken. We remind you that manhole covers may be raised where the road surface has been removed.

On Wednesday 19th and Thursday 20th January 2022, highlighted in **bold** in the table below, vehicular access to residents' properties in the affected roads will be limited for several hours whilst the road is resurfaced and the asphalt material then cools. We suggest you may wish to park vehicles elsewhere on the estate as we will not be able to drive over the new road surface until advised by our contractor.

Our contractor has indicated that both the preparation work and main resurfacing works will start at about 0800 each morning and generally finish mid-afternoon each day.

Date	Day	Location	Activity
17/01/2022	Monday	Lower Woodside Hill	Removal of old surface and preparation for new road surfacing
		Upper Chiltern Hill	Removal of old surface and preparation for new road surfacing
		Sandy Rise	Preparation for surfacing patching works
18/01/2022	Tuesday	Lower Woodside Hill	Removal of old surface and preparation for new road surfacing
		Upper Chiltern Hill	Removal of old surface and preparation for new road surfacing
19/01/2022	Wednesday	Lower Woodside Hill	New road resurfacing works (part)
		Upper Chiltern Hill	New road resurfacing works (part)
		Sandy Rise	Surfacing patching works
20/01/2022	Thursday	Lower Woodside Hill	New road resurfacing works (part)
		Upper Chiltern Hill	New road resurfacing works (part)
21/01/2022	Friday	Winkers Lane Spur	Preparation for surfacing works
22/01/2022	Saturday		No work
23/01/2022	Sunday		No work
24/01/2022	Monday	Winkers Lane Spur	New road resurfacing works